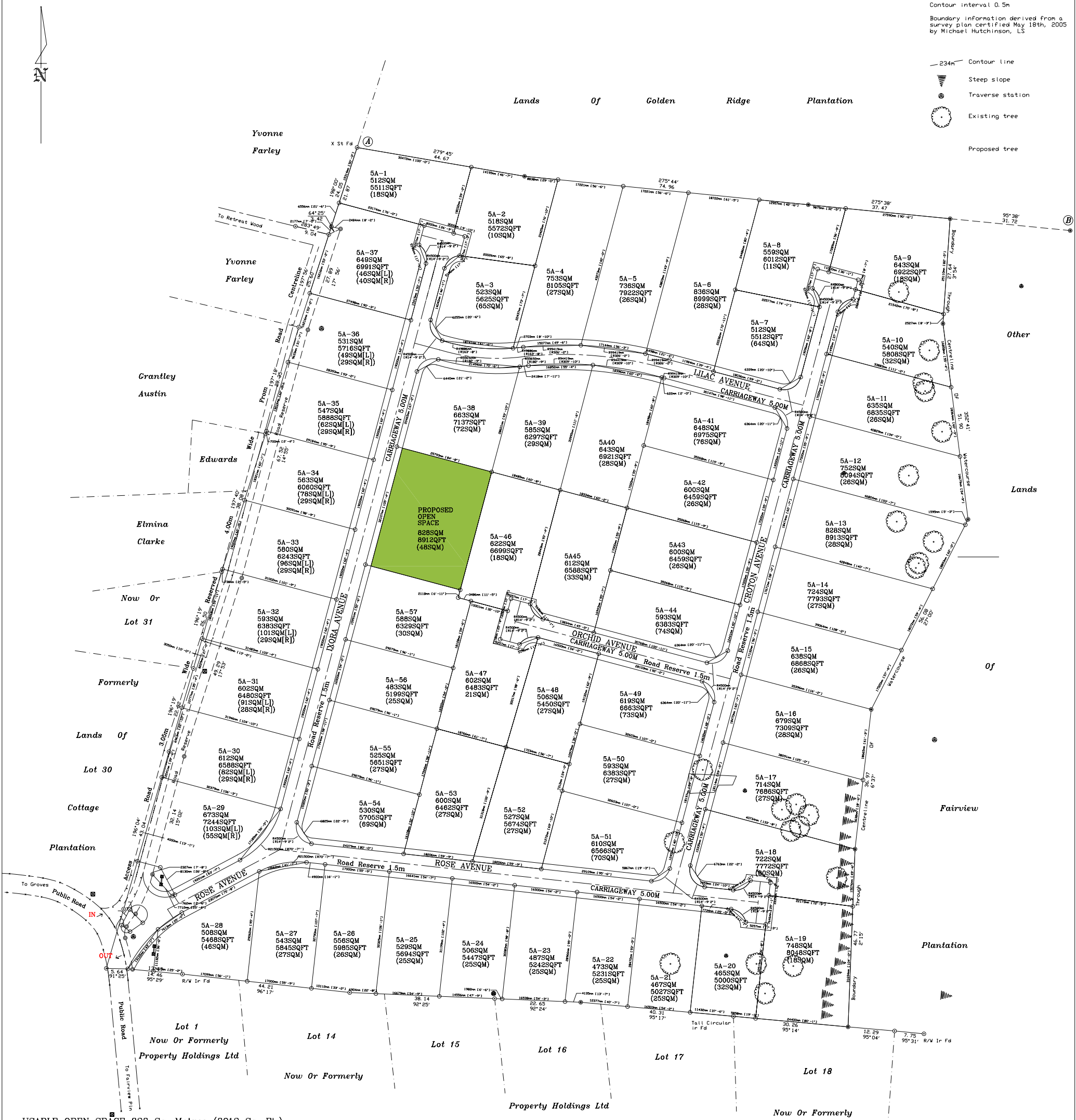


Note:
 Distances are in metres
 Levels are in metres and relate to site T.B.M as indicated
 Contour interval 0.5m
 Boundary information derived from a survey plan certified May 18th, 2005 by Michael Hutchinson, LS

- 234m Contour line
- Steep slope
- Traverse station
- Existing tree
- Proposed tree

Lands Of Golden Ridge Plantation



USABLE OPEN SPACE 828 Sq. Metres (8912 Sq. Ft.)

ENTRANCE WAY AREAS: NORTH OF ISLAND = 48 Sq. Metres (517 Sq. Ft.)
 SOUTH OF ISLAND = 43 Sq. Metres (463 Sq. Ft.)

1 Sq. Metre = 10.764 Sq. Ft. Approx.

AREA OF ROAD RESERVE IS SHOWN IN BRACKETS. THIS AREA IS INCLUDED IN THE OVERALL LOT AREA SHOWN.

SUBDIVISION PLAN FOR BOUGAINVILLEA ESTATES FAIRVIEW, ST. GEORGE



BANNATYNE, CHRIST CHURCH, BARBADOS
 Tel.: 246.437.1467 Email: ep@caribsurf.com

PROJECT
 BOUGAINVILLEA ESTATES
 LOT 5 FAIRVIEW PLANTATION, ST. GEORGE

DRAWING TITLE: SUBDIVISION PLAN
 DRAWING NO.: SD-1A

Scale: 1 : 500
 Date: MAR 2008 Rev1-02/11
 Drawn: R.D.S
 Job No: 26-06